

Light Scattering from Human Hair Fibers

Category: Research

Abstract

Light scattering from hair is normally simulated in computer graphics using Kajiyama and Kay's classic phenomenological model. We have made new measurements that exhibit visually significant effects not predicted by Kajiyama and Kay's model. Our measurements go beyond previous hair measurements by examining out-of-plane scattering, and together with this previous work they show a multiple specular highlight and variation in scattering with rotation about the fiber axis. We explain the sources of these effects using a model of a hair fiber as a transparent elliptical cylinder with an absorbing interior and a surface covered with tilted scales. Based on an analytical scattering function for a circular cylinder, we propose a practical shading model for hair that qualitatively matches the scattering behavior shown in the measurements. In a comparison between a photograph and rendered images, we demonstrate the new model's ability to match the appearance of real hair.

CR Categories: I.3.7 [Computer Graphics]: Three-Dimensional Graphics and Realism—Shading

Keywords: hair, fibers, optical scattering, rendering

1 Introduction

Realistically rendering hair is essential to portraying people and animals, but achieving realism means confronting many challenges inherent in the structure and behavior of hair. The geometry of thousands to millions of strands must be determined; the scattering of light from the fibers must be simulated; and the resulting thin curves in the image must be sampled without introducing aliasing. Most of the research effort on hair has gone toward modeling and animating the geometry of a collection of fibers [Sourin et al. 1996; Xu and Yang 2001; Hadap and Magnat-Thalmann 2000; Chen et al. 1999; Kim and Neumann 2000; Kim and Neumann 2002; Chang et al. 2002], efficient antialiasing and curve-drawing algorithms for scanline rendering [Kong and Nakajima 1999; Watanabe and Suenaga 1992; Kong and Nakajima 2000], and approximating shadows within the hair [Lokovic and Veach 2000; Kim and Neumann 2001]. However, considerably less attention has been put toward the scattering model that determines the appearance of a particular assembly of fibers. Sometimes models for reflection from grooved surfaces [Kajiyama 1985; Poulin and Fournier 1990] are used to compute scattering from combed fibers, but most hair ren-

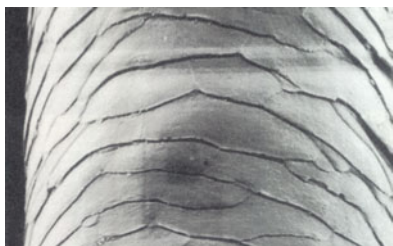


Figure 1: An electron micrograph of a hair fiber, showing the structure of the outer cuticle surface, which is composed of thin overlapping scales. [Robbins 1994]

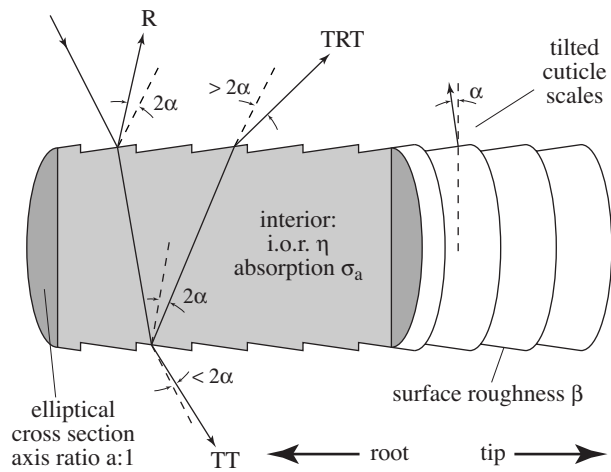


Figure 2: A schematic of our model for a hair fiber. The dashed lines indicate the scattering angles for a cylinder without surface features.

derings have used the classic phenomenological model of Kajiyama and Kay [1989].

Kajiyama and Kay's model was designed to capture the most obvious feature of scattering from a fiber—namely the appearance of a linear highlight in the image running perpendicular to the fiber directions. It is based on the observation that the reflection of a parallel beam from the surface of a cylinder will be in a cone centered on the hair axis. The model places a constant-intensity highlight centered on that cone. All other scattering is accounted for by a diffuse term that produces radiance proportional to the cosine of the incident angle. Although it has served well for many years, this model falls short in several respects. For one thing, it is not energy conserving, which is important for physically based rendering.

But even when physical correctness is not needed, the Kajiyama-Kay model fails to predict some observed visual effects. Since it models fibers as opaque cylinders, it does not account for transmission or internal reflection. Hair is a dielectric material, and blond, brown, red, or other light colored hair is very translucent. Goldman has simulated translucency by adding a directional parameter that controls the relative amount of forward transmission and backward reflection [Goldman 1997]. Kim has extended this model in a more physically based spirit by proposing a two-term phase function [Kim 2002]. The first term models surface reflection as a cardioid, based on a ray density argument; our R component is similar but accounts for the Fresnel factor and handles oblique incidence. The second term models transmission as a forward scattering cosine lobe, supported by Monte Carlo computations of normal-incidence scattering from a transparent circular cylinder. We extend Kim's model by accounting for the Fresnel factor and volume absorption in an analytical model that also includes internal reflection, modeling the separation of highlights from different reflection modes, and approximating the effects of eccentricity.

Two research groups working in the cosmetics industry have measured the scattering properties of hair fibers in order to understand what makes hair look pleasing and healthy. Stamm et al. [Stamm et al. 1977] measured relative scattering from a rack

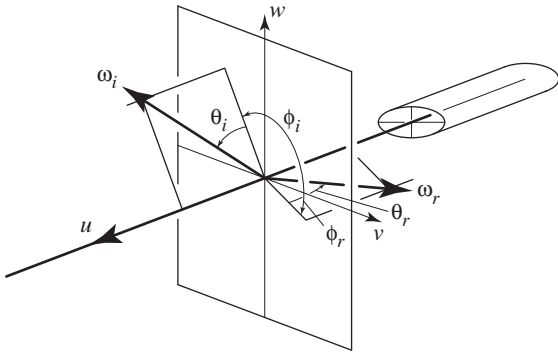


Figure 3: Notation for scattering geometry.

of individual fibers as a function of illumination and viewing angles for directions coplanar with the fiber axis (that is, in the incidence plane). They discovered two deviations from the expected behavior. First, the primary specular peak occurs at an angle several degrees away from the specular direction. They speculated that the angular shift is caused by the tilt of the scales forming the cuticle of the hair fiber. Second, there is a secondary lobe that occurs on the other side of the specular direction. Bustard and Smith [Bustard and Smith 1991] have observed that the first peak preserves polarization, whereas the second peak is depolarized. Both groups also observed that the secondary highlight is not present in black hair. Bustard and Smith also report a preliminary observation of azimuthal scattering in the plane normal to the fiber in which they observed strong peaks, which they conjectured are internal reflection caustics. These experiments support the hypothesis that the secondary peak is due to internal reflection off the back side of the fiber.

We have made an experimental and theoretical study of the scattering of light from individual fibers of human hair, and developed a simple practical model for use in computer graphics. Specifically,

- In addition to the incidence-plane measurements of Stamm et al. and Bustard and Smith, we measure scattering in the plane normal to the fiber. We also report for the first time full 3D hemispherical scattering measurements. Several new appearance phenomena are visible in the 3D data. First, the primary specular highlight continues all the way around the hair, while the secondary highlight is confined to the side of the hair toward the source. Second, a pair of large out-of-plane peaks, or glints, are present, and as the incidence angle increases the peaks move closer to the incidence plane, eventually merging and disappearing.
- The scattering distribution, especially the secondary highlight, depends on the angle of rotation of the hair fiber about its axis. This is to be expected because hair fibers are not generally circular in cross-section [Robbins 1994].
- To explain our observations, we propose a simple model based on the structure and composition of hair fibers. We approximate the hair as a transparent circular cylinder with a colored interior and a surface composed of rough, tilted scales. Using geometric optics, we derive predictions for the far-field scattered light distribution from such a cylinder. Our theory predicts that three transport modes are significant: surface reflection, transmission, and internal reflection.
- Based on the theory, we propose a shading model for human hair. We illustrate its use by producing several example renderings of brown hair. The shading model is simple and easily

incorporated into standard rendering algorithms. Finally, we validate the model against experimental data and show there is good qualitative agreement.

2 Fibers

We begin by presenting some background information on human hair fibers. We also introduce the notation we use in this paper, and define the light scattering function for fibers.

2.1 Hair Fibers and Fiber Scattering

A fiber of human scalp hair is composed of two main parts: the *cuticle* and the *cortex*. The cuticle is a thin protective outside sheath that surrounds the inner cortex.

The cuticle is of particular importance for light scattering, since it forms the interface between the fiber and the air. It is composed of flat cells that overlap like roof shingles (Figure 1) and make the fiber appear as a nested set of cones. Because of their overlapped arrangement, the surfaces of the scales deviate slightly but systematically from the overall normal of the fiber’s surface, tilting their surfaces toward the root end of the fiber by approximately 3° [Bustard and Smith 1991; Robbins 1994].

The cortex forms the bulk of the fiber. At the center is a pigmented core, the *medulla*. The pigments in the cortex and medulla determine the hair color.

In this paper, we approximate the optical properties of the interior of the fiber with two quantities: an index of refraction η of approximately 1.55 [Stamm et al. 1977] and an absorption cross-section σ_a .

As we will see, the morphology of the hair fiber provides an explanation for the main features of the scattering function. The fiber is modeled as a dielectric cylinder covered with tilted scales and with a pigmented interior (Figure 2). Reflection of a directional beam from a cylinder produces several distinct components of reflected light, all directed into a cone of outgoing directions. Reflection from the surface produces a component that is spread fairly uniformly around the cone. Transmission through the hair produces a very bright component that is focused toward directions on the opposite side of the hair. Light that reflects off the inside of the hair surface produces a back-scattering component. This component is more complicated and, depending on the shape of the cylinder and the angle of incidence, may spread the energy over the whole cone or focus it into one or more caustics. Using T and R to stand for transmission and reflection across a cylinder interface, we denote these three modes of reflection as R, TT, and TRT.

As illustrated in Figure 2, the tilt of the cuticle scales shifts the cones of the R and TRT components slightly off the ideal specular cone. More importantly, they shift in opposite directions, causing them to separate into two visually distinguishable highlights. The R highlight, since it is surface reflection, is white, whereas the TRT highlight, which is formed by light that passes through the interior of the fiber, is colored.

2.2 Scattering

Before getting into more detail, let us establish the notation we will use throughout the paper to describe the scattering geometry (Figure 3). The tangent to the hair is u , pointing in the direction from the root toward the tip; the vectors v and w complete a right-handed orthonormal basis, and if the cross section is elliptical v is the major axis and w is the minor axis. We refer to the v - w plane as the normal plane. The direction of illumination is ω_i , and the direction in which scattered light is being computed or measured is ω_r ; both directions point away from the center. We express ω_i and ω_r in

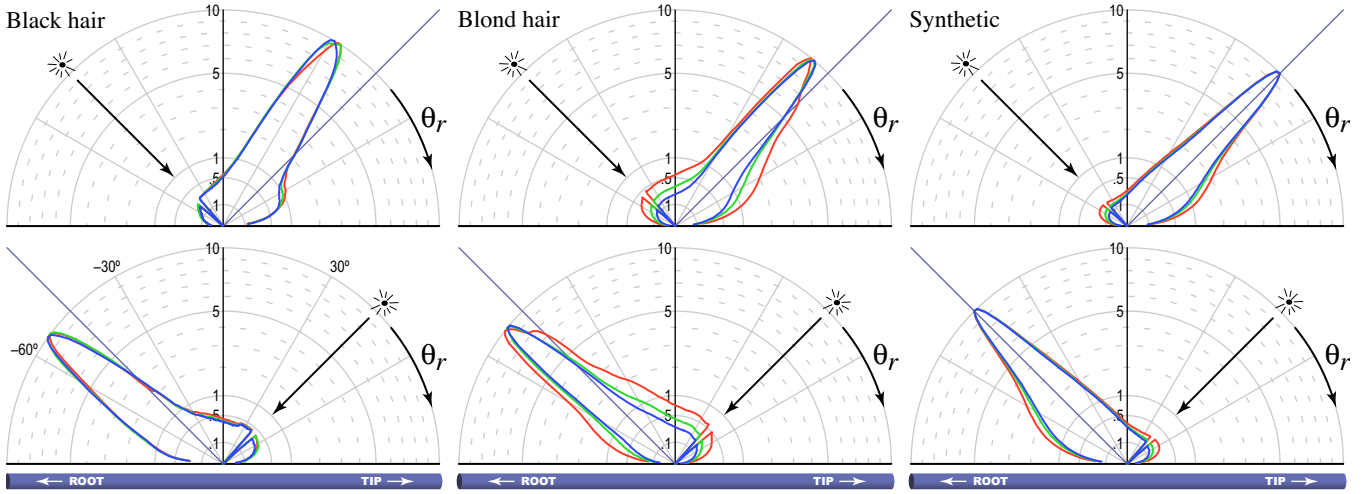


Figure 4: Measurements of scattering in the incidence plane: scattering as a function of scattering angle with illumination at 45° from the tip and root ends. Black [subject JM] and blond [subject HM] hair are shown, along with a synthetic fiber from a wig.

spherical coordinates. The inclinations with respect to the normal plane are denoted θ_i and θ_r (measured so that 0° is perpendicular to the hair, 90° is u , and -90° is $-u$). The azimuths around the hair are denoted ϕ_i and ϕ_r (measured so that v is 0° and w is $+90^\circ$).

We also use several derived angles. The difference angle $(\theta_r - \theta_i)/2$ is denoted θ_j . The relative azimuth $\phi_r - \phi_i$ is denoted simply ϕ . The averages $\theta_h = (\theta_i + \theta_r)/2$ and $\phi_h = (\phi_i + \phi_r)/2$ are called half angles.

The bidirectional scattering function S for a fiber is different from the bidirectional reflection distribution function f_r for a surface, although it shares the same physical units. For the incident and reflected light we use *curve irradiance* \bar{E} , or power per unit length, and *curve intensity* \bar{L} , or intensity per unit length, respectively. These units are analogous to irradiance (power per unit area) and radiance (intensity per unit area) on a surface.

$$S(\omega_r, \omega_i) = \frac{d\bar{L}_r(\omega_r)}{d\bar{E}_i(\omega_i)},$$

where \bar{L}_r is the curve intensity scattered from an infinitesimal length of fiber, and \bar{E}_i is the curve irradiance on that portion of the fiber. This irradiance is proportional to incoming radiance:

$$d\bar{E}_i(\omega_i) = DL_i(\omega_i) \cos \theta_i d\omega_i,$$

where D is the diameter of the fiber. Note that the area over which the irradiance is measured is Ddl where D is the diameter of the fiber and dl is an infinitesimal arc length along the fiber.

Given this definition, the scattering integral is written as

$$\bar{L}_r(\omega_r) = D \int_{S^2} S(\omega_i, \omega_r) L_i(\omega_i) \cos \theta_i d\omega_i \quad (1)$$

Note that, unlike a surface where the integral extends over the upper hemisphere, this integral extends over the entire sphere. The presence of D in this equation indicates that a thick fiber intercepts more light, and therefore appears brighter from a distance, than a thin fiber.

3 Scattering measurements

The experimental component of our study of hair was intended to provide a qualitative and quantitative understanding of the phenomena that need to be explained by a scattering model for hair. In this

paper, we briefly outline these measurements; a full description of our experiments will be provided in a future paper.

In our experiments we illuminated individual hairs with a narrow beam and measured the scattered light in various directions using a setup based on a four-axis goniometer that positioned a light source and a CCD camera at arbitrary directions from the sample. We used a focused beam to illuminate only a small length of hair, on the order of 1 to 2 cm, and this illuminated segment defined the length of hair being measured. This served to reduce the effects of any variations in properties along the length of the hair.

3.1 Incidence plane

Stamm et al.'s and Bustard and Smith's measurements were in the incidence plane, meaning that they observed only the 2D slice of the scattering function for which the source and detector are coplanar with the fiber. To verify these earlier results, we made the same kind of measurements on samples of several different types of hair and on a synthetic fiber from a wig (Figure 4).

For each sample, we set the angle of incidence to 45° and measured scattering for varying outgoing angles. We performed this experiment twice, once with the illumination from the direction of the root (with $\theta_i = -45^\circ$), and again with the illumination from the direction of the tip (with $\theta_i = 45^\circ$). Each measurement was made in three color bands across the visible wavelength range. Note that the small gap near the incidence angle in each plot is due to the camera occluding the light source.

The most prominent feature in the scattering function is the specular highlight that occurs approximately when $\theta_r = -\theta_i$. For the synthetic hair the highlight occurs exactly at the specular direction, but for the real hairs it occurs 6 to 10 degrees toward the root, regardless from which direction the hair is illuminated. Additionally, the blond hair, but not the black hair, has a color-dependent asymmetry in the lobe, with a side lobe appearing closer to the specular direction than the primary highlight. A background of diffuse reflection is present that is larger and more colored for the blond hair. In other measurements of this type we always observed the secondary highlight (except in black hair), but its strength and width varied considerably.

To study the effects of both θ_i and θ_r on the scattering function in the incidence plane, we made a second measurement for one blond fiber. This measurement was parameterized in terms of θ_h and θ_j .

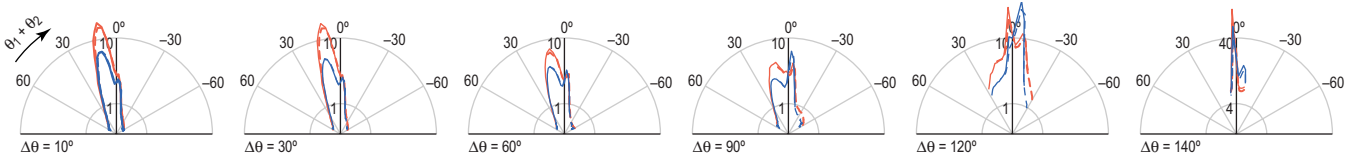


Figure 5: Measurements of scattering in the incidence plane: scattering as a function of θ_h for several values of θ_d . The red and blue curves are two color bands; for this blond hair [subject HM] the very strong secondary highlight can be seen to be higher in the red. The solid and dashed curves are two reciprocal measurements combined to extend the instrument's range.

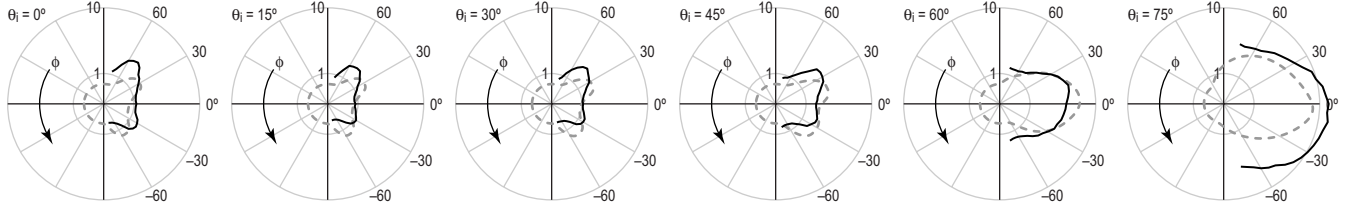


Figure 6: A measurement showing the evolution of glints with incidence angle on a more nearly circular hair [subject JD]. For each θ the source is fixed while the camera sweeps along the specular cone. A qualitative match to our shading model is plotted with dashed curves.

Each sweep was made with the source and detector fixed, thereby holding θ_d fixed, and the hair rotating to vary θ_h .

A selection of the results of this full incidence-plane measurement are shown in Figure 5. In these plots, both the primary and secondary highlight are visible, on either side of zero, which corresponds to the specular direction. This hair in this configuration has a very strong secondary highlight that is actually stronger than the primary highlight for most angles. As the scattering angle increases, θ_d the secondary highlight fades out, while the primary highlight maintains more constant amplitude. Both peaks maintain approximately constant width. At high angles the primary highlight gives way to a sharp peak that emerges very close to the specular direction. This appears to be the same phenomenon that Stamm et al. observed and named the equal-angle peak.

3.2 Normal plane

To begin to understand the full 3D complexities of the scattering function, in particular the secondary highlight, we made another planar 2D measurement, but with the plane of the source and detector oriented approximately perpendicular to the fiber; that is, in the normal plane. Within this plane, the azimuths ϕ_i and ϕ_r both varied independently. To be more precise, the incident direction was in the normal plane but the scattering direction was on the cone at $\theta_r = 10^\circ$. This is because the shift we have observed in the highlights due to the tilt of the cuticular scales would prevent us from observing the secondary highlight if we measured exactly in the normal plane. In this and the following measurements, we show only the red wavelength band, because that is where the secondary highlight is most prominent.

The results are plotted as solid lines in Figure 7. We have organized the data in terms of ϕ_i and the relative azimuth ϕ , so each polar scattering diagram corresponds to a sweep of the camera with the source fixed, and moving from diagram to diagram corresponds to changing the light source angle (or equivalently, rotating the hair around its axis). The wedges of missing data are caused by the mechanical constraints of the goniometer.

This measurement shows that there are two bright out-of-plane peaks. The strength and ϕ locations of the peaks vary from hair to hair. We refer to this peak as a ‘‘glint’’ because of the visual effect it produces.

Furthermore, the glints change considerably in brightness and

position as a function of ϕ_i , which shows that the hair is not rotationally symmetric. However, two symmetries are evident in the figure. One is a 180° rotational symmetry in ϕ_i (diametrically opposite plots are similar); the other is by negating both ϕ_i and ϕ (vertical bilateral symmetry of the whole figure). Together these symmetries suggest that the hair has a 180° rotational symmetry and is bilaterally symmetric in cross section.

When the pattern of glints is symmetric about the plane of incidence ($\phi_i = 0$), it looks a lot like the caustic formation due to refraction in a sphere or cylinder with circular cross-section. More generally, the evolution of the peaks as the fiber rotates appears similar to the internal reflection from a transparent elliptical cylinder, as we discuss in Section 6.1. A microscopic inspection of another fiber from the same individual reveals it has an eccentricity of 0.7:1.

3.3 3D Hemispherical Measurements

3.3.1 Changes in glints with angle of incidence

It is instructive to examine the secondary highlight as a function of ϕ while varying the incidence angle. This shows whether and how this highlight evolves as the inclination of the hair to the light source changes. To make this measurement, we arrange for the source and camera to be at approximately equal incidence angles θ on opposite sides of the normal plane, and we measure the ϕ dependence by sweeping the camera along its cone while keeping the light source fixed. The results are plotted as solid lines in Figure 6.

As in the previous measurement, the camera needs to be a bit more toward the tip than the source in order to observe the maximum glint intensity, so we maintain the condition that $\theta_i + \theta_r = 10^\circ$ as we vary θ_i .

The phenomenon shown by this measurement is that the azimuth at which the glints occur changes as a function of incidence angle, with the glints moving toward the incidence plane as the incidence moves from normal to grazing. They appear to merge around $\theta = 60^\circ$. This behavior provides another clue to the structure: such a merging transition is characteristic of the caustics formed by internal reflection in a cylinder [Mount et al. 1998]. The measured eccentricity of this fiber is approximately 0.8:1.

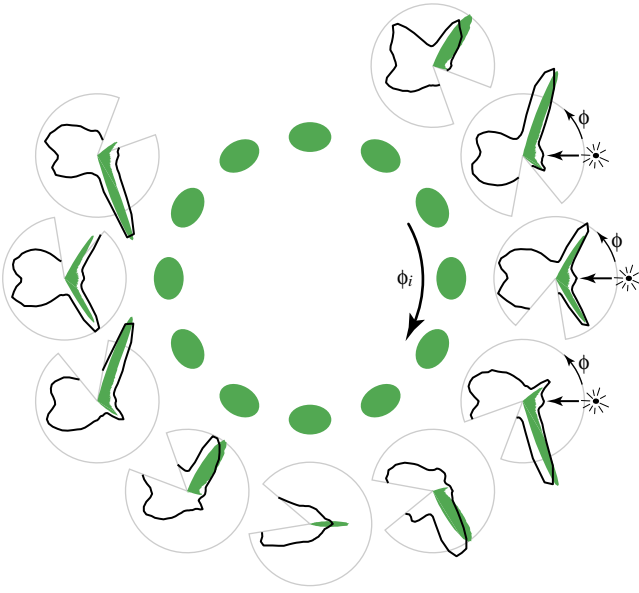


Figure 7: A measurement of scattering in the normal plane from a blond hair with substantial eccentricity [subject HM]. Illumination comes from the right in all plots; the green ellipses indicate the hair orientation. Bright glints appear whose location and strength depend on the orientation of the hair. The green plots are the results of Monte Carlo scattering simulation on the proposed fiber model.

3.3.2 Hemispherical scattering

These measurements extended the 1D incidence plane measurements by varying ϕ_r as well as θ_r , so that the scattering direction varied over a full hemisphere. For a fixed direction of incidence, this is a complete measurement of the scattering function (or half of it, which suffices given bilateral symmetry—a reasonable if inexact assumption when we are not allowing ϕ_i to vary).

The results are shown in Figure 8. In this plot, several curves for fixed values of ϕ are plotted together against θ_r . A primary highlight appears at $\theta_r = 40^\circ$, and a broad secondary highlight appears around 50° – 80° . Moving from curve to curve, the primary highlight maintains a fairly constant amplitude and shift from the specular cone (marked by a blue line in the plot). The secondary highlight becomes stronger, peaks around $\phi = 30^\circ$, and then dies out. The forward-scattering half of the scattering function, shown with a larger scale on the lower axes, is dominated by a strong forward-scattered component that is not shifted appreciably from the specular cone.

3.4 Summary

To summarize, our experiments measuring the scattering of light from hair fibers revealed the following phenomena. Here, we categorize the phenomena in terms of the scattering modes of a dielectric cylinder (Section 2).

- R: Shift of the primary specular peak toward the root. This deviation is hypothesized to be due to the tilt in the scales on the hair fiber.
- TT: A strong forward scattering component from light colored hair. This causes blond, brown, gray and white hair to look very bright when lit from behind.
- TRT:

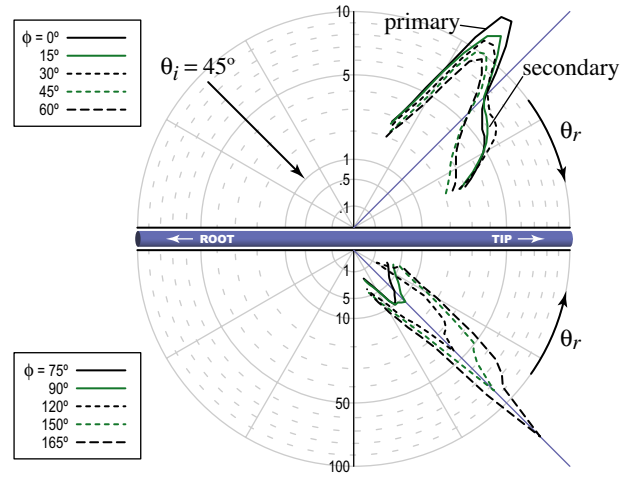


Figure 8: A measurement of one hemisphere of the scattered distribution for a fixed incident direction with angle of incidence 45° . The primary highlight, the secondary highlight, and the transmitted component are all visible [subject HM].

- A colored secondary peak shifted toward the tip from the white primary specular peak. In an image of a head of hair, this leads to the secondary highlight that is visible just above the primary, sometimes appearing more as a colored fringe on the primary than a separate feature.
- The secondary highlight varies as a function of ϕ . It generally contains two peaks, or glints. The locations of the peaks depends on the angle of incidence, and they converge to the incidence plane as θ increases. Furthermore, for hair that is not circular in cross section, the strength and position of the glints depend strongly on the angle of rotation of the hair around its axis. This gives the hair fiber a distinctive sparkling appearance.
- Most of the energy in the secondary highlight is contained between the two glints.

4 Theory of scattering from fibers

In this section we present background theory applicable to scattering from smooth cylinders. We show that because of the symmetry of a cylinder, the 4D scattering function can be factored into a product of 2D terms, one capturing the θ dependence and another the ϕ dependence. We also develop the theory of internal reflection in a circular cylinder and derive terms for reflection, transmission and internal reflection. Finally, we add factors that account for Fresnel effects and absorption.

4.1 Scattering from cylinders

For fibers formed by translating a fixed cross-section along a single axis we can separate the 4D scattering function to a product of 2D terms. We make use of properties that have been used in previous work on scattering from fibers [Marcuse 1974; Adler et al. 1998; Mount et al. 1998]:

- A ray that enters a dielectric cylinder at a particular inclination to the axis will always exit at the same inclination, regardless of the sequence of refractions and reflections it undergoes.

This means that a bundle of parallel incident rays coming from the direction ω_i will produce a collection of scattered rays whose directions lie on the cone centered on the fiber axis and containing $-\omega_i$ (Appendix A). The directions of the refracted rays inside the hair also lie on a cone. This effectively reduces the scattering function from 4D to 3D, because scattering only occurs when $\theta_r = -\theta_i$. Of course, this equality holds only approximately if the surface is rough, and it depends on the assumption that there is no volumetric scattering inside the cylinder.

- The dependence of the scattered distribution on ϕ_r can be analyzed by examining only the projection into a plane perpendicular to the hair.

It's easy to see that the R component can be computed just from the projection—the incident and reflected vectors are arranged symmetrically across the surface normal in the projection just as they are in 3D, so a mirror reflection from the 3D cylinder remains a mirror reflection in the projection.

The same holds for refracted rays, as a consequence of Bravais's law (derived in Appendix B), which states that if the incident and transmitted vectors at a dielectric interface are projected into a plane containing the surface normal, the projected vectors still obey Snell's law, but with the index of refraction η replaced by $\eta'(\eta, \theta) > \eta$. Note that η' depends only on the inclination θ of the incident ray out of the projection plane, and is independent of the angles in the projection plane. Thus, since we know that all rays originating from a particular incident direction maintain the same inclination to the normal plane, a 2D analysis that works in the normal plane for arbitrary refractive index suffices to describe the 3D scattering function.

These two facts allow us to write the scattering function for a smooth cylinder of any cross-section as:

$$S(\phi_i, \theta_i; \phi_r, \theta_r) = \delta(\theta_r + \theta_i) N(\eta'(\theta); \phi_i, \phi_r) / \cos^2 \theta$$

The first factor says that scattering only occurs in the specular cone; the second factor N represents the azimuthal scattering function; and $\cos^2 \theta$ accounts for the projected solid angle of the specular cone. We write simply θ to emphasize that $\theta_i = \theta_r$. Since θ influences N only indirectly through η' , we can derive N independently using a 2D analysis. In the next section, we will generalize this expression to

$$S(\phi_i, \theta_i; \phi_r, \theta_r) = M(\theta_i, \theta_r) N(\eta'(\theta_d); \phi_i, \phi_r) / \cos^2 \theta_d; \quad (2)$$

that is, we will allow for a more complicated dependence on θ . We will refer to M as the longitudinal scattering function.

4.2 Scattering from a circular cross-section

In this section we derive N assuming a circular cross section. With circular symmetry, N depends only ϕ , the difference between ϕ_i and ϕ_r , so the 2D azimuthal scattering function is further reduced to 1D. Scattering from a dielectric circle is well studied, having been first analyzed by Descartes to explain the formation of the rainbow in a rain shower (for a full discussion, see, e.g., Humphreys [Humphreys 1964])

We can determine the far-field intensity by tracing rays as they refract through a circle. Consider a ray incident on a unit circle at an offset $-1 < h < 1$ from its center (see Figure 9). The angle $\sin \gamma_i = h$ is the angle of incidence, and $\eta' \sin \gamma_t = h$ is the angle of the refracted ray. By following a ray entering a circle as it refracts and reflects, we can calculate the exit angle $\phi(h)$.

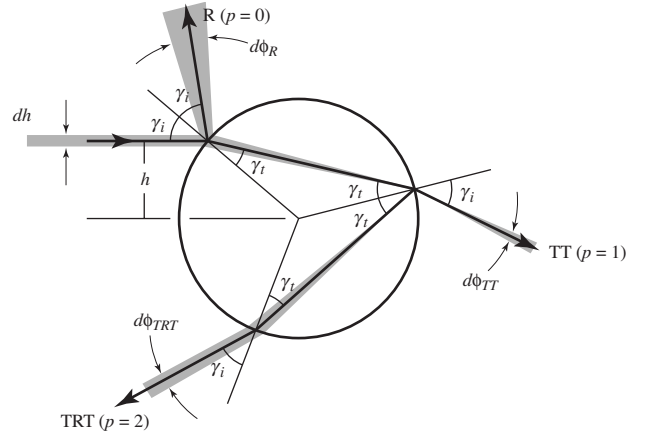


Figure 9: Geometry for scattering from a circular cross section.

From Figure 9 it can be seen that the incident ray deviates by $\gamma_i - \gamma_t$ as it enters the circle, by $\pi + 2\gamma_t$ at each internal reflection, and by $\gamma_t - \gamma_i$ again as it exits, for a total of

$$\phi(p, h) = 2p\gamma_t - 2\gamma_i + p\pi \quad (3)$$

where p is the number of internal path segments.¹ This expression encompasses all three scattering modes we are interested in, for different values of p : surface reflection R ($p = 0$), refractive transmission TT ($p = 1$), and internal reflection TRT ($p = 2$). For the rest of this analysis, we will ignore $p > 2$ terms.

The above path tracing algorithm parameterizes paths by h . However, for scattering calculations we often need to find all the paths that contribute to scattering in a given direction ϕ . The h values for these paths are found by solving for the roots of the function $\phi(p, h) - \phi = 0$. We denote these roots by the function $h(p, r, \phi)$, where different values of r denote different roots. In the $p = 0$ and $p = 1$ cases, there is a single root, and thus a single path. However, for the $p = 2$ case, there may be one or three roots and hence one or three paths.

Since the function ϕ is smooth, the transition from a single exit ray to three exit rays represents a fold in $\phi(2, h)$ and this fold occurs when $\frac{d\phi}{dh} = 0$. Descartes first showed that this fold occurs when [Humphreys 1964]:

$$h^2 = (4 - (\eta')^2)/3. \quad (4)$$

This expression is symmetric, and predicts that two symmetric extrema exist.

Now that we have the expression (3) to relate ϕ and h , we can compute the intensity of the scattered light by using the principle of energy conservation. When curve irradiance \bar{E} illuminates a fiber, uniform irradiance $E(h) = \bar{E}/2$ falls on the cross section across its width.² Setting aside attenuation for the moment, power from a small interval dh in the incident beam is scattered into an angular interval $d\phi$ in the exitant intensity distribution (Figure 9).

$$\bar{L}(\phi(h)) d\phi = E(h) dh = (\bar{E}/2) dh \quad (5)$$

or

$$\bar{L}(\phi(h)) = \left| 2 \frac{d\phi}{dh} \right|^{-1} \bar{E} \quad (6)$$

¹Note that $p\pi$ accounts for $p - 1$ internal reflections plus the reversal in direction from ω_i , which points outward.

²For the unit radius circle \bar{E} is spread out across the fiber width of 2. The fiber diameter does not affect S.

This equation implies that intensity goes to infinity at the fold in the function ϕ . This intensity singularity is called a caustic.

In the case of a circular cylinder, the pair of caustics cause the glints. Since in the cylinder the Bravais index η' increases with θ , the two caustics will move closer to the plane as the incident light becomes more oblique to the hair. When η' reaches 2, the caustic ceases to form. This caustic merge transition can be seen in the measurement plotted in Figure 6.

4.3 Attenuation by absorption and reflection

In this section we add terms for absorption and reflection, and write down the complete normal-plane scattering function.

For absorption we need to know the path length inside the fiber. Applying the law of cosines to the triangles in Figure 9 gives the length of each internal path segment as $2 + 2\cos(2\gamma_i)$ times the hair's radius. Let σ_a be the volume absorption per unit length, with the unit length defined to be the radius of the hair. Then each of the p segments inside the hair contributes a factor of $T(\sigma_a, h) = \exp(-2\sigma_a(1 + \cos(2\gamma_i)))$ to the absorption.

Now we can introduce an attenuation factor in front of the intensity contributed by a path

$$\bar{L}(\phi) = A(p, h) \left| 2 \frac{d\phi}{dh} \right|^{-1} \bar{E} \quad (7)$$

where

$$\begin{aligned} A(0, h) &= F(\eta, \gamma_i) \\ A(p, h) &= (1 - F(\eta, \gamma_i))^2 F(1/\eta, \gamma_i)^{p-1} T(\sigma_a, h)^p. \end{aligned}$$

Just as Bravais's law lets the normal-incidence geometry factor work for oblique incidence, we can generalize A to oblique incidence simply by changing the parameters. Appendix B shows that the correct Fresnel factors may be computed using the usual Fresnel formulas and two virtual indices of refraction, $\eta'(\theta)$ and $\eta''(\theta)$. Similarly, because all the internal path segments have the same inclination θ_i to the axis, they lengthen by a factor of $1/\cos\theta_i$, so substituting $\sigma'_a(\theta) = \sigma_a/\cos\theta_i$ for σ_a completes the generalization to 3D:

$$\begin{aligned} A(0, h) &= F(\eta', \eta'', \gamma_i) \\ A(p, h) &= (1 - F(\eta', \eta'', \gamma_i))^2 F\left(\frac{1}{\eta'}, \frac{1}{\eta''}, \gamma_i\right)^{p-1} T(\sigma'_a, h)^p \end{aligned}$$

The complete normal-plane scattering function is thus

$$\begin{aligned} N(\phi) &= \sum_p N(p, \phi) \\ N(p, \phi) &= \sum_r A(p, h(p, r, \phi)) \left| 2 \frac{d\phi}{dh}(p, h(p, r, \phi)) \right|^{-1} \quad (8) \end{aligned}$$

where the sum is over all the paths of different types (p) including those with multiple roots (r).

5 A practical shading model for human hair

The theory presented in the previous section predicts the key features of the scattering function of a fiber, but it predicts a perfectly sharp ideal specular reflection. To integrate this model into a renderer, we need to extend the theory to include blurring due to surface roughness, the shifts in the components caused by the cuticle scales, and to account for eccentricity.

The basic form of our model follows Equation 2 but with N broken up into the three modes with three different longitudinal cross sections M :

$$\begin{aligned} S(\phi_r, \theta_i; \phi_r, \theta_r) &= \\ &M_D + M_R(\theta_h) N_R(\eta'(\eta, \theta_d), \phi) / \cos^2 \theta_d + \\ &M_{TT}(\theta_h) N_{TT}(\eta'(\eta, \theta_d); \phi) / \cos^2 \theta_d + \quad (9) \\ &M_{TRT}(\theta_h) N_{TRT}(\eta'(\eta^*(\phi_h), \theta_d); \phi) / \cos^2 \theta_d. \end{aligned}$$

Note that only the angles θ_d , ϕ , θ_h , and ϕ_h appear on the right hand side above. Writing the M s and N s in terms of sums and differences in this way emphasizes the natural symmetry of S and will make it easy to see that the model is reciprocal.

The terms

$$N_R(\phi) = N(0, \phi)$$

and

$$N_{TT}(\phi) = N(1, \phi)$$

are the same as derived in the last section (Equation 8). In this section we introduce approximations for the diffuse term (M_D), for the longitudinal scattering functions (M_R etc.), for $h(p, r, \phi)$, and for N_{TRT} . We also introduce convenient parameters for controlling the model.

It is important to recognize that the purpose of the model given in this section is to capture the phenomena that are important in rendering. The form of the model and the basic energy distribution come from the theory in the previous section, but many details for which a simple analysis is not available are filled in empirically.

5.1 The diffuse component M_D

The measurements show a diffuse component that is correlated to the color of the hair, so we include a diffuse component M_D in our model. Likely sources for diffuse reflection include high order ($p > 2$) internal reflection, volume scattering in the interior of the fiber, and scattering from surface features, such as damaged or lifted cuticle scale edges, that are not modeled by surface roughness.

Because much of the diffusely scattered light will have traveled some distance through the interior of the fiber, the color of the diffuse component should be related to the hair's absorption. Therefore we let the diffuse reflection come from a color space spanned by white and the colors that can be produced by absorption in the hair:

$$M_D = k_D \exp(-l_D \sigma_a) + k_w,$$

where k_D , k_w , and l_D are the diffuse parameters. It is understood that this equation applies separately for each color component, with different values for σ_a .

5.2 The longitudinal scattering function M

The analysis of a smooth cylinder predicts that the reflected light will stay exactly in the specular cone. Our hair model includes two features that cause deviations from this behavior. First, the interfaces are rough. As rays propagate through the cylinder, the roughness will cause their directions to deviate randomly from the directions predicted by the model. The overall effect is to blur the scattered distribution, with the different scattering modes blurred to different degrees. Second, the cuticle scales cause a tilt of the surface normals relative to the ideal cylinder, which causes the scattered lobes not to be centered on the specular cone.

Figure 2 illustrates how we can expect the positions of the lobes to shift: the R mode is displaced by 2α toward the root; the TRT mode is displaced more than that far toward the tip; and the TT

Parameter	purpose	typical values
<i>Fiber properties</i>		
η	index of refraction	1.55
σ_a	absorption coefficient (R, G, B)	0.2 to ∞
a	eccentricity	0.85 to 1
<i>Surface properties</i>		
α_R	longitudinal shift of R lobe	-10° to -5°
α_{TT}	longitudinal shift of TT lobe	$-\alpha_R/2$
α_{TRT}	longitudinal shift of TRT lobe	$-3\alpha_R/2$
β_R	longitudinal width (stdev.) of R lobe	5° to 10°
β_{TT}	longitudinal width (stdev.) of TT lobe	$\beta_R/2$
β_{TRT}	longitudinal width (stdev.) of TRT lobe	$2\beta_R$
<i>Diffuse component</i>		
k_D	color diffuse coefficient	0
l_D	equivalent path length for color	1 to 2
k_w	white diffuse coefficient	0
<i>Glints</i>		
k_G	glint scale factor	0.5 to 5
w_c	azimuthal width of caustic	10° to 25°
$\Delta\eta'$	fade range for caustic merge	0.2 to 0.4
Δh_M	caustic intensity limit	0.5

Table 1: All the parameters to the shading model.

mode is displaced toward the tip.³ We approximate the effects of the scales by shifting the mean of M differently for each lobe.

$$\begin{aligned} M_R(\theta_d) &= g(\beta_R; \theta_h - \alpha_R) \\ M_{TT}(\theta_d) &= g(\beta_{TT}; \theta_h - \alpha_{TT}) \\ M_{TRT}(\theta_d) &= g(\beta_{TRT}; \theta_h - \alpha_{TRT}) \end{aligned}$$

where $g(\beta, x)$ is a unit-integral, zero-mean lobe function with width β . In our implementation we used a normalized Gaussian function with standard deviation β .

5.3 The azimuthal scattering function N

In this section we introduce three approximations to the azimuthal scattering function. The first is an efficient method for solving for paths, the second is a phenomenological model for the secondary highlights, and the third is a simple model for glints.

5.3.1 Solving for Paths

In order to find a path through a circle, we must solve Equation 3 for the value or values of $h(p, r, \phi)$ that result in the scattering angle ϕ . Because the formula for ϕ involves Snell's Law and hence arcsines, it is computationally expensive to solve for h exactly.

To simplify the angular dependence, we approximate Snell's law with the cubic polynomial that matches the value and derivative of the exact expression at $\pm 90^\circ$:

$$\gamma_i = \frac{3c}{\pi} \gamma_i - \frac{4c}{\pi^3} \gamma_i^3$$

where $c = \sin^{-1}(1/\eta')$ (in this expression angles γ are measured in radians). The maximum approximation error is less than 0.75° for $\eta > 1.5$.

With this approximation, ϕ is a cubic in γ_i :

$$\hat{\phi}(p, \gamma_i) = \left(\frac{6pc}{\pi} - 2 \right) \gamma_i - \frac{8pc}{\pi^3} \gamma_i^3 + p\pi. \quad (10)$$

³For the TT and TRT components the shifts depend on the incidence angle, and for all three components the shift depends on ϕ , but we ignore these effects.

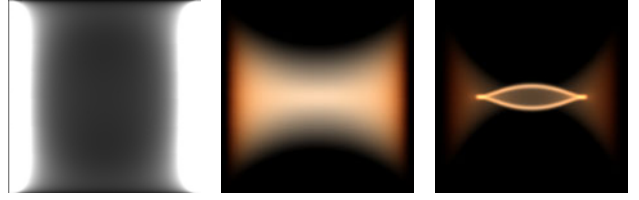


Figure 10: Overview of the N component for a circular fiber. From left to right, R, TT, and TRT components. In each image, the horizontal axis represents θ from $-\pi/2$ to $\pi/2$ and the vertical axis represents ϕ , from $-\pi$ to π for R and TRT and from 0 to 2π for TT.

The roots of this equation yield γ_i from which h is easily found. For the R and TT cases there will always be exactly one root, whereas the TRT case may have one or three roots.

5.3.2 Approximation for TRT

For N_{TRT} we choose not to use the theory directly, because the caustic has infinite intensity. It is important to include the blur of the caustic that is caused by surface roughness, which is not handled by the theory. Therefore, we remove the sharp caustic peak from the theoretical scattering function and replace it with a smooth lobe to simulate a blurred caustic.

The angle ϕ_c at which the caustic appears can be computed from Descartes's formula (Equation 4) when it is defined, but for incidence angles past the caustic merge it is undefined. To maintain continuity we continue to insert the caustic at $\phi_c = 0$ and fade it out smoothly over a short range of incidence angles past the merge. It is simplest to precisely describe this component by giving the procedure used to compute it:

```

function  $N_{TRT}(\theta, \phi; w_c, k_G, \Delta\eta', \Delta h_M)$ 
  if ( $\eta'(\theta) < 2$ )
    Compute  $h_c, \phi_c$  using  $\eta'(\theta)$  in (4)
     $\Delta h = \min(\Delta h_M, 2\sqrt{2w_c/|d^2\phi/dh^2(h_c)|})$ 
     $t = 1$ 
  else
     $\phi_c = 0$ 
     $\Delta h = \Delta h_M$ 
     $t = \text{smoothstep}(2, 2 + \Delta\eta', \eta'(\theta))$ 
   $L = N(2, \phi)$ 
   $L = L(1 - tg(\phi - \phi_c, w_c)/g(0, w_c))$ 
   $L = L(1 - tg(\phi + \phi_c, w_c)/g(0, w_c))$ 
   $L = L + tk_G A(2, \theta, \phi) \Delta h (g(\phi - \phi_c, w_c) + g(\phi + \phi_c, w_c))$ 
  return  $L$ 

```

In this procedure we roughly approximate the power that is removed from the intensity distribution by using $d^2\phi/dh^2$ to estimate the size Δh of the interval in h that maps within w_c of ϕ_c . The limit Δh_M is necessary because $d^2\phi/dh^2$ goes to zero at the caustic merge. The function $\text{smoothstep}(a, b, x)$ is 1 for $x < a$, 0 for $x > b$, and smooth in between.

The user-adjustable parameters to this function are w_c , the width of the blur for the caustics, k_G , a factor to adjust the strength of the glints, $\Delta\eta'$, the range of η' over which to fade out the caustic after the merge, and Δh_M , a limit on the caustic power.

5.3.3 Approximation for eccentricity

When the fiber's cross section is elliptical rather than circular, a simple analytical solution for N is not available. However, the appearance of the TRT component is significantly affected by even mild eccentricity: The angle ϕ_c at which the caustics appear

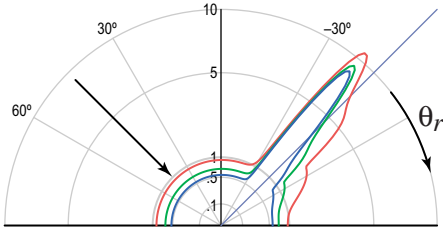


Figure 11: A plot of the shading model, under the same geometric conditions used in Figure 4. The parameters have been adjusted to match the behavior of the blond hair (top center plot in that figure).

changes by $\pm 100\%$ over the range from $a = 0.85$ to $a = 1/0.85$. Because eccentricities in this range are very common, it is important to approximate the effect of eccentricity on the TRT component.

Changing refractive index has effects that are qualitatively similar to changing eccentricity. One case for which it is simple to analyze this relationship in the TRT component is paraxial paths that are symmetric across the major axis. For these paths $\phi_i = -\phi_r$ and the reflection occurs on the major axis. If γ'_i is the angle of incidence at the internal reflection it can be shown that

$$\frac{d\phi_r}{d\gamma'_i} = 2a^2(\eta - 1) - \eta.$$

We can use this first-order approximation to roughly match the behavior of the circular model to the elliptical one by using the index of refraction $\eta^* = 2a^2(\eta - 1) - \eta + 2$ in the circular model.

This gives us an approximation for how the TRT component of the scattering function changes with mild eccentricity when ϕ_h is aligned with one of the principal axes. To incorporate this approximation into the practical model, we simply interpolate sinusoidally to define η^* for all intermediate values of ϕ_h :

$$\begin{aligned} \eta_1^* &= 2(\eta - 1)a^2 - \eta + 2 \\ \eta_2^* &= 2(\eta - 1)a^{-2} - \eta + 2 \\ \eta^*(\phi_h) &= \frac{1}{2}((\eta_1^* + \eta_2^*) + \cos(2\phi_h)(\eta_1^* - \eta_2^*)) \end{aligned}$$

When eccentricity needs to be simulated, we simply pass the refractive index η^* to the code that computes N_{TRT} using the formulas derived from the circular case.

5.4 Summary

We have now accounted for all the terms that appear in Equation 9. The diffuse term M_D is a constant. The three longitudinal scattering functions M_R , M_{TT} , and M_{TRT} are Gaussians. The azimuthal scattering functions N_R and N_{TT} are evaluated directly from Equation 8, using Equation 10 to compute h . The azimuthal scattering function N_{TRT} is first computed using Equations 8 and 10 with the refractive index η^* , summing over the possibly multiple values of h , then modified by the procedure in Section 5.3.2 to smooth out the caustics.

For reference, all the parameters of the model are collected in Table 1.

6 Results

6.1 Validation

In this section we provide evidence that our assumptions about the structure of hair are valid and that the shading model can qualitatively reproduce the behaviors we have seen in the measurements.



Figure 12: A photograph [Gray 1997] showing brown hair with a prominent secondary highlight caused by a small light source near the camera. Glints help give the hair its distinctive natural texture.

Validating the hair structure model against measurements.

The normal-plane measurement in Figure 7, which best illustrates the glints, behaves entirely consistently with the model of a hair as an elliptical cylinder. To show this, we have used a Monte Carlo procedure to compute the scattering due to the TRT mode in a rough elliptical cylinder with eccentricity matching the measured value for this individual. The figure shows the results of this numerical experiment plotted with the results of the physical experiment. The match in both the angular and the intensity variation in the peaks is striking, providing clear evidence both for the explanation of the glints as internal reflection caustics and for the model of the hair's cross-section as an ellipse. Note that the real data of course includes some contributions from the other scattering modes, which is noticeable in forward scattering, where the TRT mode does not contribute.

Validating the shading model against measurements. In order to demonstrate the ability of our shading model to qualitatively match the behavior of real hair, we have adjusted the parameters to fit two of the measurements from Section 3. In Figure 11 we show a plot of the model adjusted to behave like the blond hair that was measured in the incidence plane (Figure 4, top center). Note that both the small side lobe and the broader lobe toward grazing are predicted.

The measurement in Figure 6 shows a caustic merge as inclination changes. The shading model is plotted as a dashed line along with the data, with a set of parameters that describes this more mildly eccentric hair. The behavior of two glints merging and disappearing matches qualitatively.

Finally, in Figure 10 we provide a graphical summary of the behavior of the N term for the three modes of reflection in the shading model.

6.2 Renderings

We have implemented the shading model described in the previous section and used it to simulate light reflection from procedurally generated hair assemblies of hair. We have used the commercial “Sasquatch” rendering software (Worley Laboratories, <http://www.worley.com>) to model the hair, and each model has roughly 50,000–100,000 fibers, corresponding to the average number of hairs on a human head.

We used ray tracing to render the images, representing the hairs

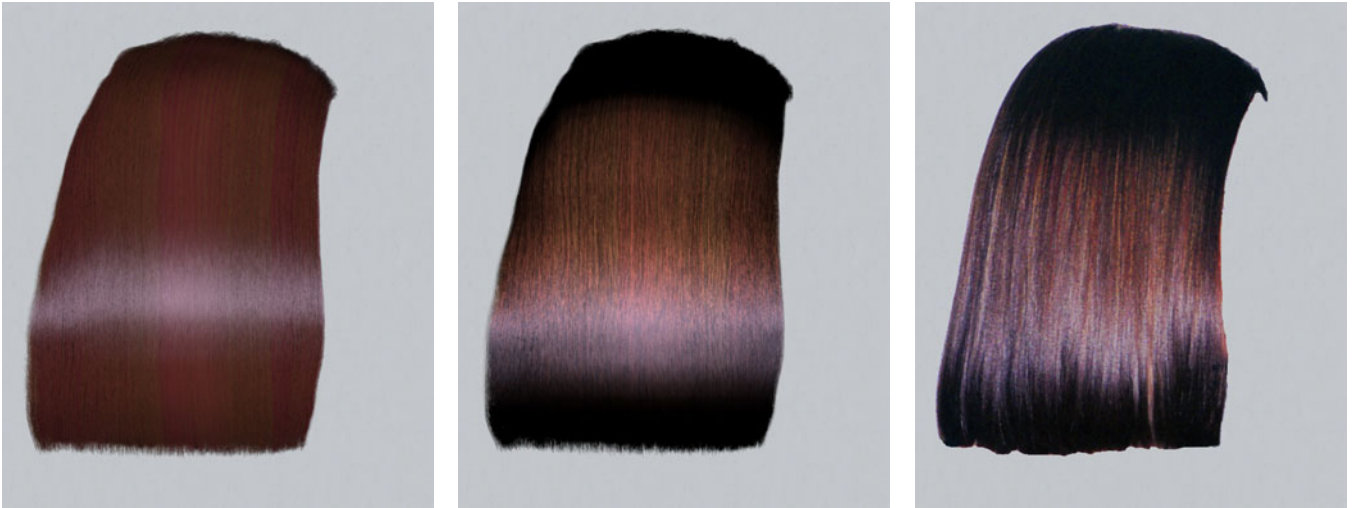


Figure 13: A comparison of Kajiyaya and Kay’s model (left) under a single point source, our proposed model (center) with the same lighting, and the hair from the photograph in Figure 12 (removed from context to simplify the comparison). The Kajiyaya model’s diffuse term results in a flat appearance, while the secondary highlight in our model correctly captures the colored shading of the real hair.

as flat ribbons that always face the ray direction, with a width equal to the hair diameter. This representation is more efficient than cylinders, and since our scattering function abstracts away all interactions below the level of strands it is appropriate.

In computing the following results, computation time was dominated by ray intersection so that even though our model is substantially more expensive to compute than Kajiyaya’s very simple model the rendering times differed by less than a factor of 2. All renderings have $\eta = 1.55$, and $\Delta h_M = 0.5$. The parameters α_{TT} and α_{TRT} are defined from α_R by the ratios recommended in Table 1.

The first set of renderings are inspired by the photograph shown in Figure 12. Because the hair is combed into a fairly flat surface, the secondary highlight is quite prominent; there is very little diffuse scattering, as evidenced by the dark appearance at the top and bottom of the hair.

We constructed an idealized geometric model to roughly match the overall shape of the hair, without attempting to reproduce the placement of the fibers exactly. In Figure 13 we show a rendering of this model using settings appropriate for mildly elliptical brown hair. The result of rendering the same model in the same lighting using Kajiyaya’s model is shown for comparison. The diffuse component required to produce an overall brown color does not adequately predict the variation in shading that occurs in the real hair, where the brown color comes from the secondary highlight. The same procedural color variation is present in both images; the additional texture from the proposed model is due to eccentricity. The parameters for this images are $\alpha_R = 3^\circ$, $\beta_R = 14^\circ$, $\beta_{TT} = 8^\circ$, $\beta_{TRT} = 22^\circ$, $\sigma_a = (0.432, 0.612, 0.98) - (0.36, 0.72, 0.94)$, $k_G = 0.4$, $w_c = 1.5^\circ$, $k_D = k_w = 0$, and $a = 0.9$.

To illustrate the components of the model and the effect of eccentricity, Figure 15 shows the two highlights separately and a comparison between circular and elliptical hair with all other parameters held constant. The parameters for these images are $\alpha = 3^\circ$, $\beta_R = 8^\circ$, $\beta_{TT} = 6^\circ$, $\beta_{TRT} = 15^\circ$, $\sigma_a = (0.44, 0.64, 0.9)$, $k_G = 0.4$, $w_c = 1.5^\circ$, $k_D = k_w = 0$, and $a = 1$ and 0.9 .

To further demonstrate the capabilities of the model we include additional results for varying light direction in Figure 16 and for complex illumination in Figure 14.

7 Conclusions

In this paper we have looked at light scattering from human hair in reality, in theory, and in rendering practice. Our measurements show that the scattering behavior of individual hair fibers differs significantly from what has previously been assumed in shading models; the theory of scattering from dielectric cylinders explains the sources of these differences; and we present a shading model that captures the relevant visual effects, including those due to eccentricity, in a practical, adjustable model for use in rendering.

The most important implication of this work is that realistic rendering of hair needs to account for the multiple modes of scattering that occur in cylinders. The standard assumption that the color comes primarily from diffuse scattering is not supported by the evidence in the case of fibers, and our images show that this assumption limits the quality of results from current hair shading models.

The shading model we have introduced could be made more accurate in future work. Two avenues for improvement are eccentric-



Figure 14: A 62K fiber hair model illuminated by a complex environment map, producing complex and realistic shading.

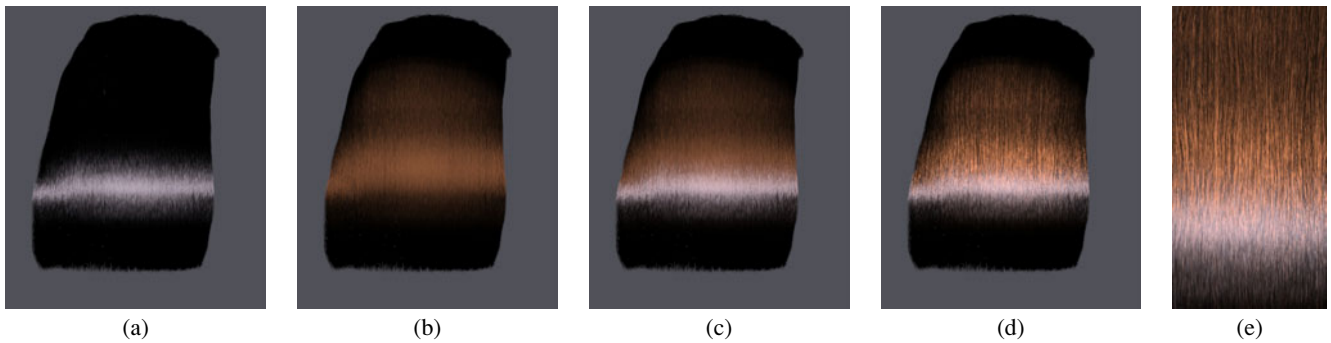


Figure 15: (a-c) The components of our model for circular hair ($a = 1$): (a) the R component (primary highlight) alone; (b) the TRT component (secondary highlight) alone; (c) the full model. (d) The full model for $a = 0.9$, showing texture due to glints; (e) an enlargement of (d).



Figure 16: A hair model under different illumination angles. As the relative strengths of the primary and secondary highlights change, they alter the color, brightness, and sheen of the hair.

ity and surface roughness. It would be useful to handle more extreme deviations from circularity, in order to allow us to accurately model more types of hair. Also, the current model approximates the effects of eccentricity on the ray density factor but not the Fresnel factor, which limits the quantitative accuracy of the energy distribution. Our model accounts for the effects of surface roughness and the scale angle in the simplest way that is consistent with the appearance phenomena. The true effects of these surface features are complicated and dependent on the scattering geometry. A more exact model of these effects could lead to a scattering model that is more accurate for grazing angles.

Our analysis applies to many kinds of transparent fibers, so it has implications for rendering animal hair, synthetic hair or fur, and all kinds of cloth.

References

- ADLER, C. L., LOCK, J. A., AND STONE, B. R. 1998. Rainbow scattering by a cylinder with a nearly elliptical cross section. *Applied Optics* 37, 9.
- BUSTARD, H., AND SMITH, R. 1991. Investigation into the scattering of light by human hair. *Applied Optics* 24, 30.
- CHANG, J., JIN, J., AND YU, Y. 2002. A practical model for hair mutual interactions. In *Proceedings of ACM SIGGRAPH Symposium on Computer Animation*, ACM SIGGRAPH.
- CHEN, L.-H., SAEYOR, S., DOHI, H., AND ISHIZUKA, M. 1999. A system of 3D hair style synthesis based on the wisp model. *The Visual Computer* 15, 4, 159–170.
- GOLDMAN, D. B. 1997. Fake fur rendering. In *Proceedings of SIGGRAPH 97*.
- GRAY, J. 1997. *World of Hair*. Hairdressing Training Board.
- HADAP, S., AND MAGNENAT-THALMANN, N. 2000. Interactive hair styler based on fluid flow. In *Computer Animation and Simulation 2000*, Eurographics, 87–99.
- HUMPHREYS, W. J. 1964. *Physics of the Air*. Dover, London.
- KAJIYA, J. T., AND KAY, T. L. 1989. Rendering fur with three dimensional textures. In *Proceedings of SIGGRAPH 1989*.
- KAJIYA, J. T. 1985. Anisotropic reflection models. In *Proceedings of SIGGRAPH 85*.
- KIM, T.-Y., AND NEUMANN, U. 2000. A thin shell volume for modeling human hair. In *Computer Animation 2000*, IEEE CS Press, 104–111.
- KIM, T.-Y., AND NEUMANN, U. 2001. Opacity shadow maps. In *Proceedings of Eurographics Rendering Workshop 2001*.
- KIM, T.-Y., AND NEUMANN, U. 2002. Interactive multiresolution hair modeling and editing. *Transactions on Graphics (Proceedings of SIGGRAPH 2002)* 21, 3.
- KIM, T.-Y. 2002. *Modeling, Rendering, and Animating Human Hair*. PhD thesis, University of Southern California.
- KONG, W., AND NAKAJIMA, M. 1999. Visible volume buffer for efficient hair expression and shadow generation. In *Computer Animation '99*, IEEE Computer Society, Geneva, Switzerland.
- KONG, W., AND NAKAJIMA, M. 2000. Hair rendering by jittering and pseudo shadow. In *Computer Graphics International 2000*, 287–294.
- LOKOVIC, T., AND VEACH, E. 2000. Deep shadow maps. In *Proceedings of SIGGRAPH 2000*.
- MARCUSE, D. 1974. Light scattering from elliptical fibers. *Applied Optics* 13, 1903–1905.
- MOUNT, C. M., THIESSEN, D. B., AND MARSTON, P. L. 1998. Scattering observations for tilted transparent fibers. *Applied Optics* 37, 9.
- POULIN, P., AND FOURNIER, A. 1990. A model for anisotropic reflection. In *Proceedings of SIGGRAPH 90*.
- ROBBINS, C. R. 1994. *Chemical and Physical Behavior of Human Hair*, third ed. Springer-Verlag, New York.
- SOURIN, A., PASKO, A., AND SAVCHENKO, V. 1996. Using real functions with application to hair modelling. *Computers & Graphics* 20, 1.

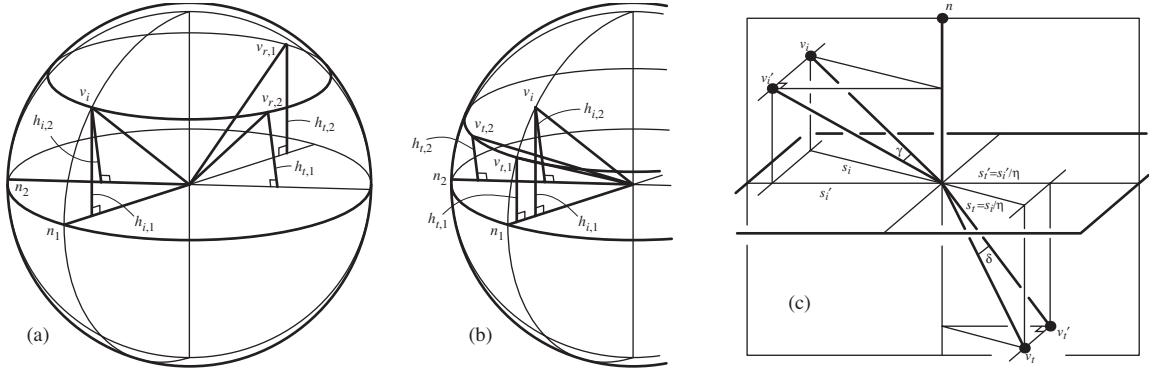


Figure 17: Reflected (a) and refracted (b) vectors from a cylinder lie in a cone; derivation of Bravais's law.

STAMM, R. F., GARCIA, M. L., AND FUCHS, J. J. 1977. The optical properties of human hair I. fundamental considerations and goniophotometer curves. *J. Soc. Cosmet. Chem.*, 28, 571.

TRICKER, R. A. R. 1970. *Introduction to Meteorological Optics*. Mills & Boon, London.

WATANABE, Y., AND SUENAGA, Y. 1992. A trigonal prism-based method for hair image generation. *IEEE Computer Graphics & Applications* 12, 1, 47–53.

XU, Z., AND YANG, X. D. 2001. V-hairstudio: an interactive tool for hair design. *IEEE Computer Graphics & Applications* 21, 3, 36–42.

A Loci of reflections

In this appendix, the geometry of reflection and refraction from a cylindrical fiber is analyzed. The set of normal vectors to a cylindrical fiber lie in a plane perpendicular to the axis of the fiber; this plane is called the normal plane. The geometry is most easily visualized using a unit sphere; each point on the unit sphere represents a different direction. On this sphere, the axis of the fiber is at the north pole and the set of normal vectors is contained in the equator (see Figure 17a).

To analyze reflection for a given incident direction v_i , consider a particular surface normal n and the corresponding reflection vector v_r . The law of reflection states that v_i , n , and v_r are coplanar and $n \cdot v_i = n \cdot v_r$. By finding similar triangles, the reflection rule also forces the distances of v_i and v_r from the equator to be equal. This equidistance condition must hold for any normal vector. Thus, the set of reflection vectors formed for a given incident direction must lie on a horizontal circle at constant height, and this circle will also contain v_i . This is a formal proof of the well-known result that, in 3D, the set of reflections from a cylinder form a cone.

Figure 17b is analogous to the previous figure, but shows the refracted directions instead. The rule for refraction (Snell's law) is similar to reflection. First, v_i , n , and v_t are coplanar. Second, Snell's Law says that $\eta \sin \theta_i = \sin \theta_t$, and using similar triangles, this law implies that the perpendicular distances to the equator, h_i and h_t , also have the ratio η . This means the transmitted vectors all lie on a circle that is a factor of η closer to the equator than the incident vector.

By the same argument, the rays that refract again on the way out of the cylinder will obey the equidistance condition. Furthermore, internal reflections are no different than external reflections. The conclusion is that all rays that exit a cylindrical fiber must lie in the same cone as the reflected rays.

B The Bravais index

A cylindrical fiber is formed by sweeping a cross-section along an axis. Bravais has shown that the optics of a 3D cylindrical fiber may be reduced to the 2D analysis of the optics of its cross section. The incident direction is first projected into the cross-section plane and then reflected and refracted in 2D. However, to model the correct physics in 2D, the index of refraction must be changed as a function of the angle of incidence. Bravais's law is often used to analyze refraction through crystals (as in ice haloes [Tricker 1970]).

Figure 17c shows the geometry of the refraction across a horizontal surface. The direction v_i is refracted in the direction v_t . To reduce this to a 2D problem, the vectors v_i and v_t are projected onto the vertical plane containing the normal. The projected vectors are labeled v'_i and v'_t . The goal is to find an effective index of refraction, η' , such that if v'_i is refracted at the boundary it will yield v'_t . First note that Snell's Law states that $\sin \theta_i = \eta \sin \theta_t$. That is, the length of the projection of v_i onto the horizontal plane is η times the length of the projection of v_t . Since v_i and v_t lie in a plane, the two triangles shown in the horizontal plane are similar. The length of each edge of the left (incident-side) triangle is η times the length of the corresponding edge in the right (transmitted-side) triangle. Second, an equivalent Snell's Law is obeyed in the vertical normal plane. Here, $\sin \theta'_i = \eta' \sin \theta'_t$. But $\sin \theta'_i = \sin \theta_i \cos \gamma$, where γ is the angle between the incident vector and its projection on the normal plane. Similarly, $\sin \theta'_t = \sin \theta_t \cos \delta$, where δ is the angle between the transmitted direction and its projection on the normal plane. Substituting, yields $\sin \theta_i \cos \gamma = \eta' \sin \theta_t \cos \delta$, and substituting Snell's Law into this equation yields $\eta \cos \gamma = \eta' \cos \delta$. Equivalently,

$$\eta' = \sqrt{\eta^2 - \sin^2 \gamma} / \cos \gamma.$$

The implication of this is that for an incident ray that makes an angle γ with the projection plane, we can compute the projection of the refracted direction from the projection of the incident direction using the usual Snell's law but substituting the effective index of refraction η' .

The Fresnel attenuation at the interface may be computed in a similar way. From Fresnel's formulas, it is straightforward to verify that the factor for oblique incidence may be computed from the projected angles by using η' for the perpendicular component of the reflectance and a second index,

$$\eta'' = \eta^2 \cos \gamma / \sqrt{\eta^2 - \sin^2 \gamma}$$

for the parallel component. We will use the notation $F(\eta', \eta'', \gamma)$ for this slightly generalized Fresnel function.